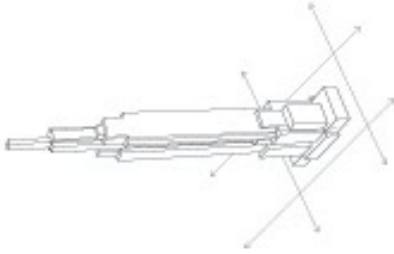


VS.

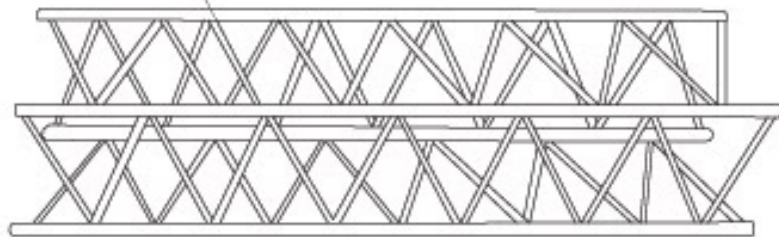




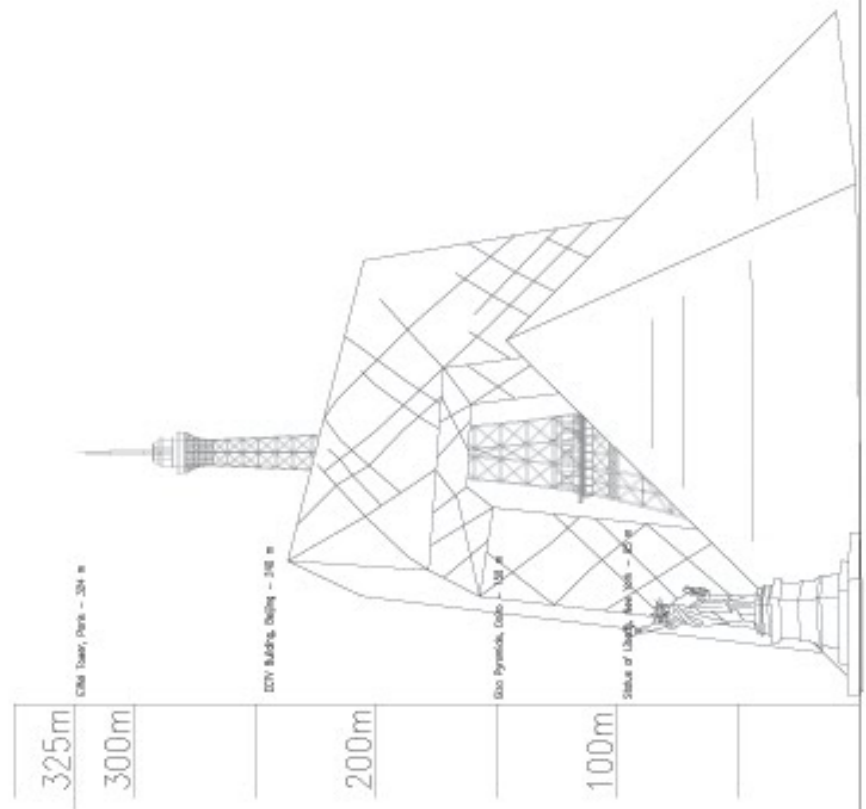
Tokelau City - Tokelau Harbor Eastern Region

Scale 1:1000

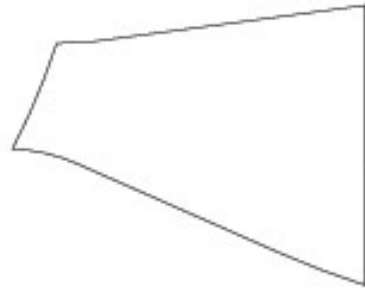
Setback Requirement



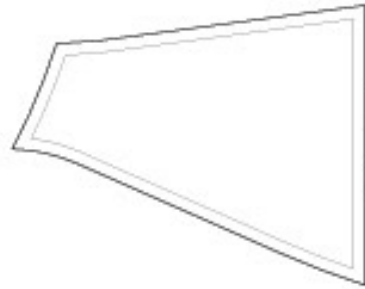
Structural system
The cross structural system of steel truss requires that are reinforced with bridge with nodes for an optimum structural form for vertical stiffness and largely supports the stabilization system of a single member.



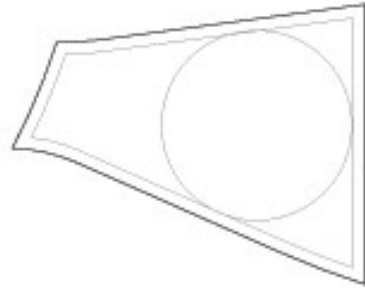
Section A-A



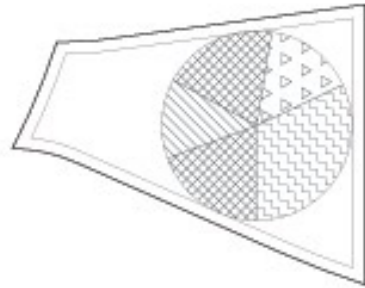
site



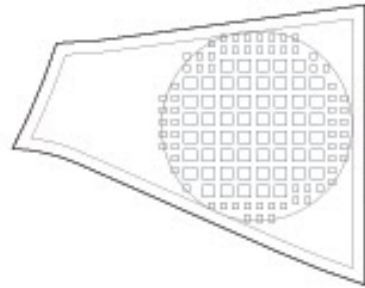
subject requirements



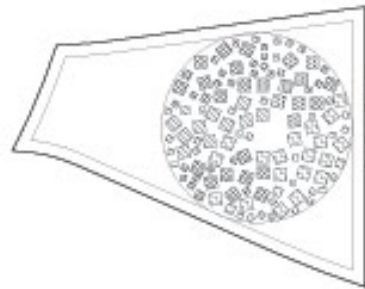
1/2 of site



program



block size - street size
(blocks = 1/4 of site (1 kg))



final configuration



Museum & Observation towers



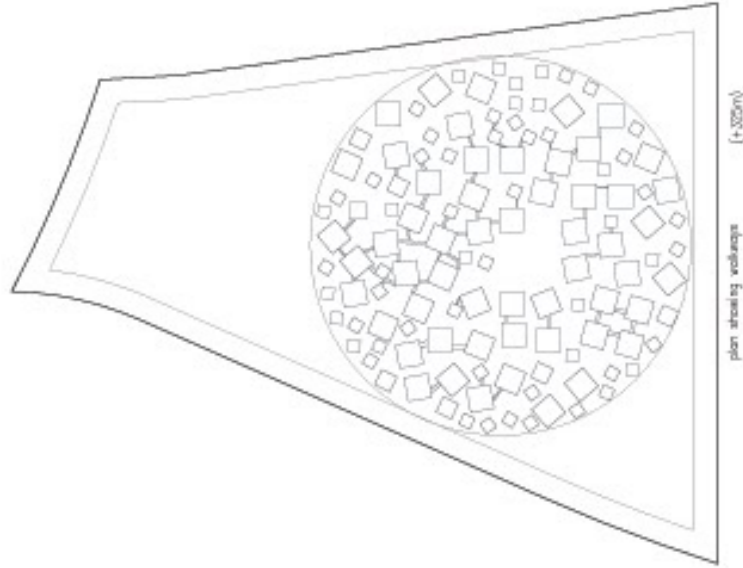
Office



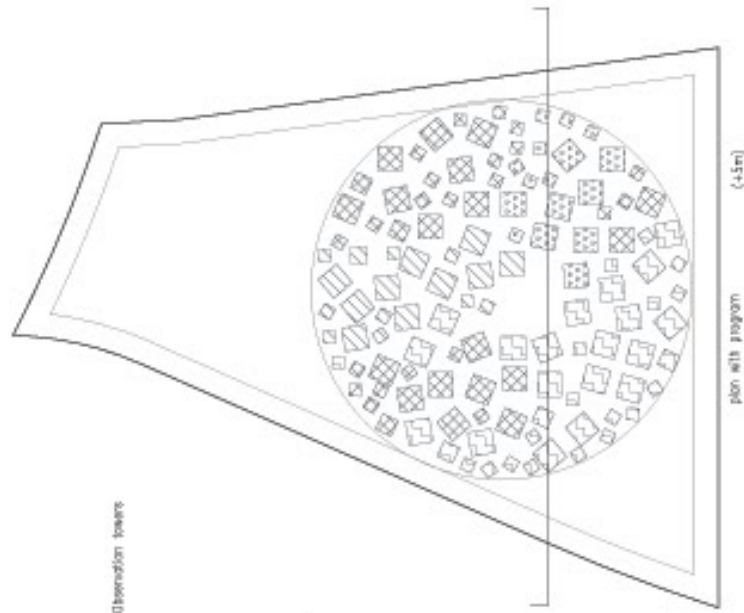
Mixed use



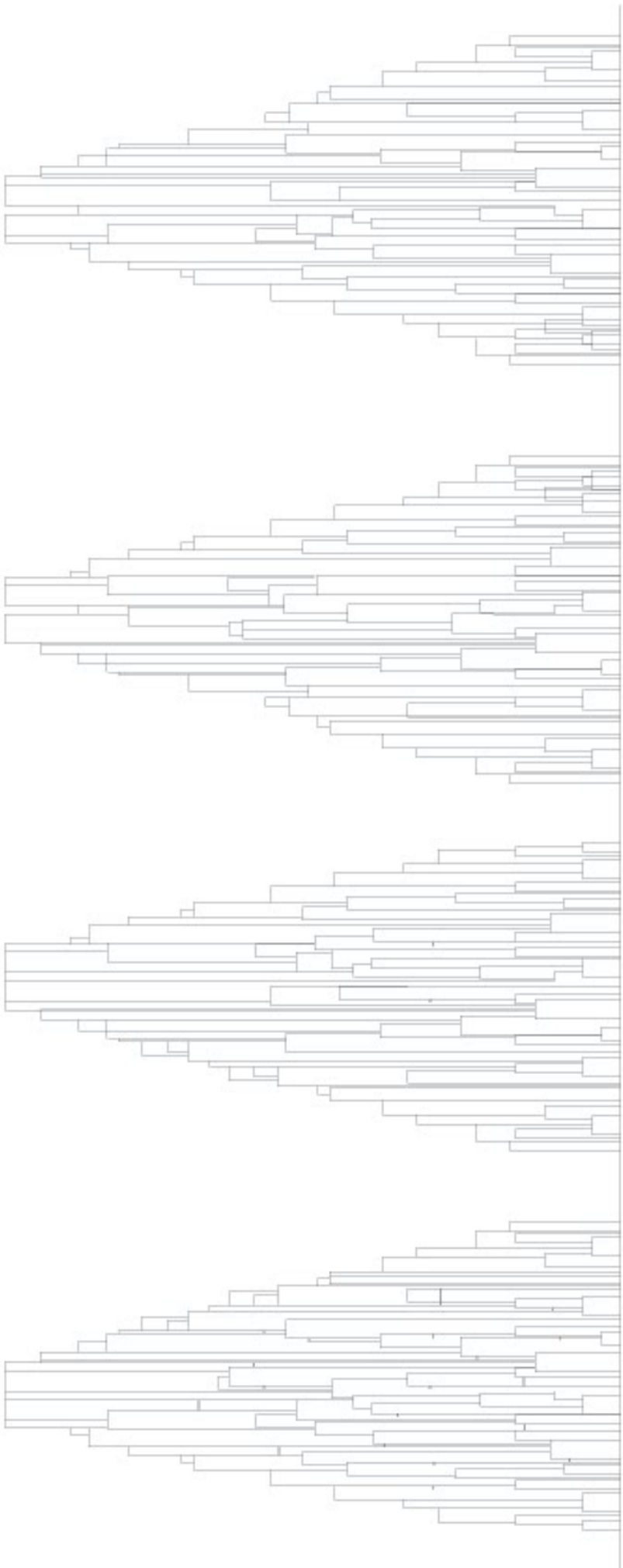
Science



plan showing volume (+325m)



plan with program (+5m)

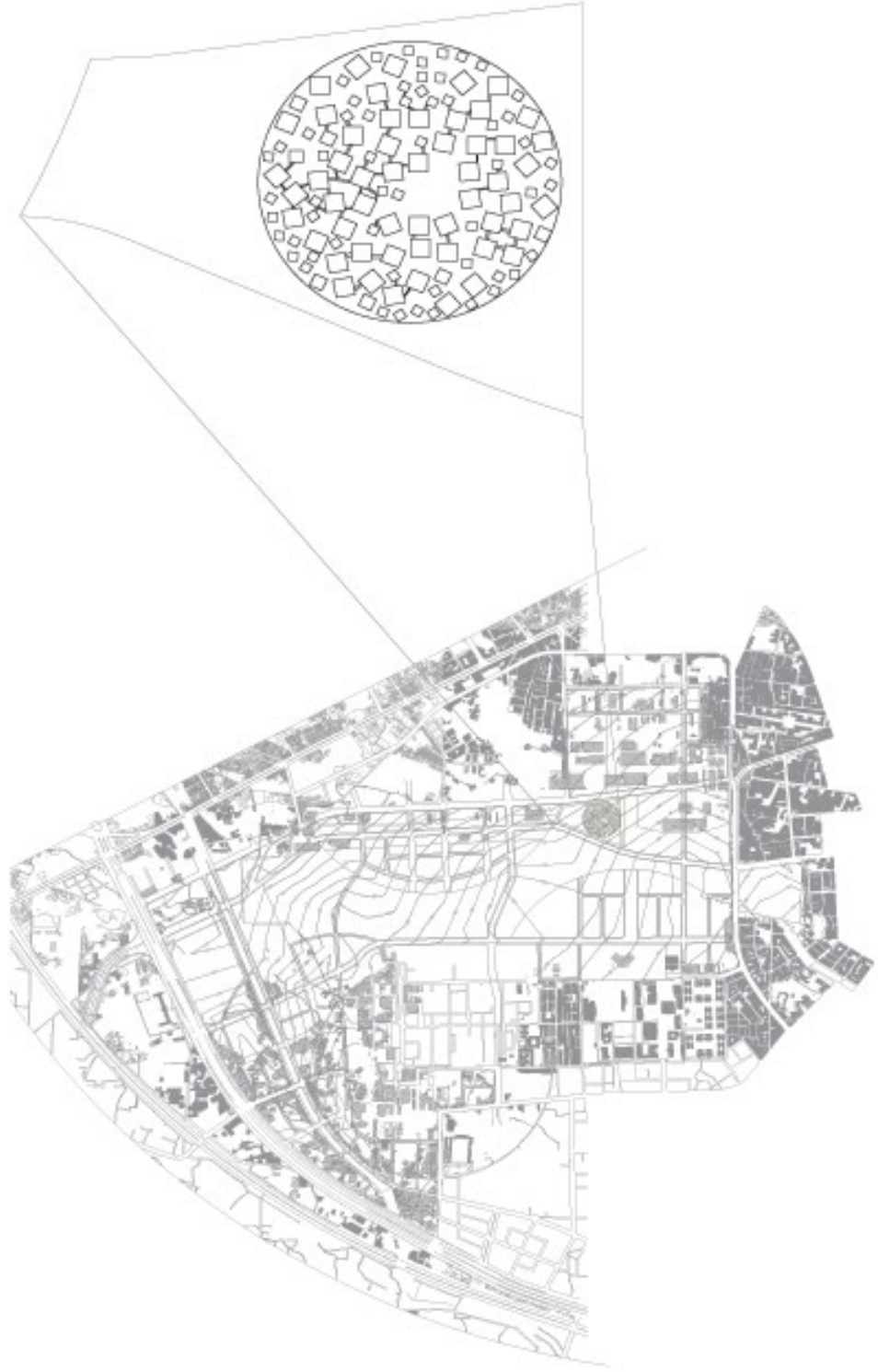


South facade

North facade

West facade

East facade



Site Elevation 1:50,000